

Donut appearance

- Observed at scintigraphy in sub acute testicular torsion.
- Preserved dartos perfusion creates a halo or donut shaped area of radiotracer uptake surrounding the photopenic testicle.
- Resembles a “donut”.



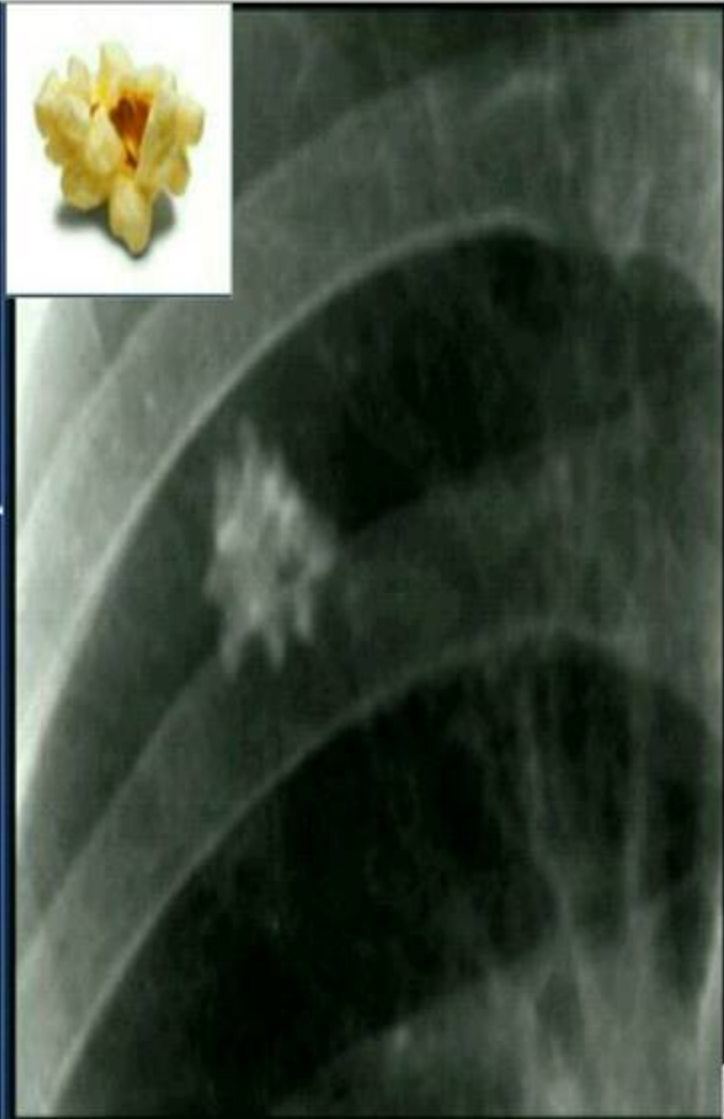
Coffee bean sign...

- Characteristic of sigmoid volvulus, consists of greatly distended, air filled loop of sigmoid colon extending from pelvis.
- The apposed medial walls of the dilated bowel form a distinct oblique line that resembles the cleft of a coffee bean.



Popcorn calcification

- Amorphous, cloudlike calcifications that resemble kernels of popcorn.
- Seen in pulmonary hamartomas.
- Other causes-
 - Fibroadenoma breast
 - Calcification in cartilaginous or chondroid lesions.



Miliary shadowing

- The areas of increased opacity are said to resemble millet seeds.
- Differentials:
 - Miliary TB
 - Fungal infections.
 - Sarcoidosis.
 - Eosinophilic granuloma.
 - Metastatic disease [particularly from thyroid tumors, melanoma & choriocarcinoma]



Egg shell calcification

- Shell like calcification in the periphery of the node.
- Hilar nodes are predominantly involved, but mediastinal, cervical and intraperitoneal nodes may be affected.
 - Silicosis
 - Sarcoidosis
 - Coal workers pneumoconiosis.
 - Post radiation Lymphoma



Rice grain calcification

- Calcified cysticerci within the muscles produce ovoid flecks of calcification parallel to the long axis of muscles.
- Resembles rice grain.



Honey comb lung

- Characterized by a pattern of coarse reticular interstitial areas of increased opacity with intervening cystic spaces.
- Represents the end results of many interstitial lung diseases.



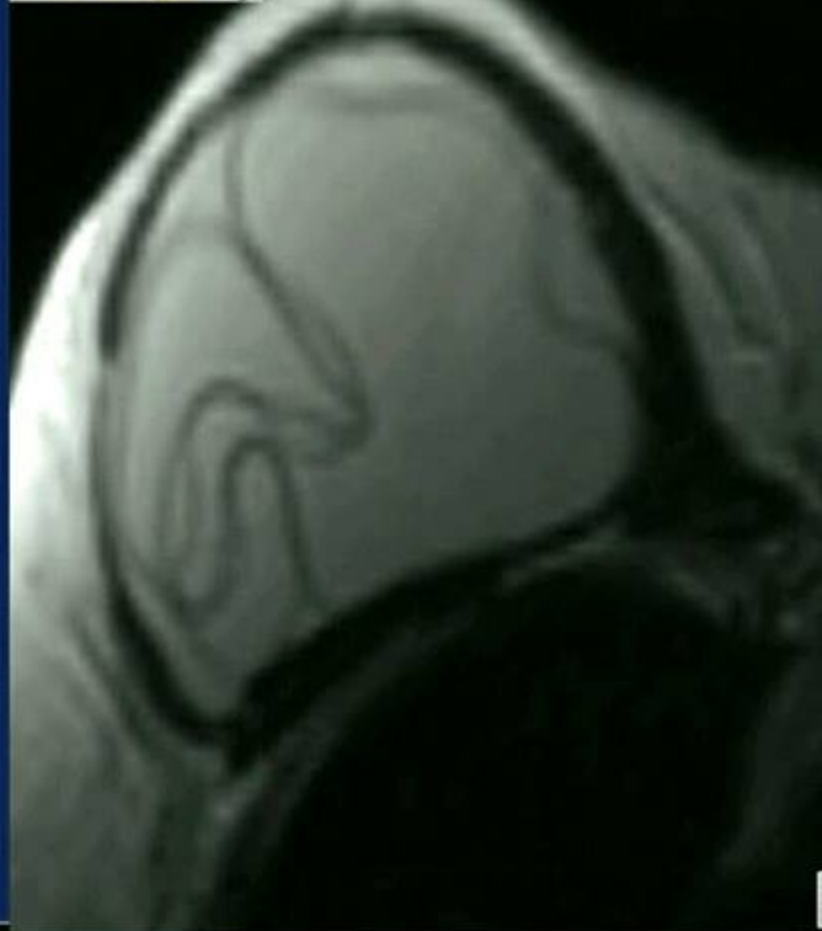
Hamburger sign

- Normally at axial CT, the vertebral facet(apophyseal) joint looks like a hamburger.
- When the facet joint is dislocated, the articular facets become uncovered or naked also called "naked facet sign".
- This CT sign is characteristic of flexion-distraction injury and indicates severe ligamentous disruption and spinal instability.



Linguine sign

- Seen at breast MR imaging and characterized by fine, curvilinear low signal intensity strands within the gel of breast implants that have ruptured.
- Best visualized on T2 MR.
- Lines >3cm in length seen on multiple consecutive images indicate implant rupture.



Salt and pepper skull

- Salt and pepper skull seen in hyperparathyroidism.
- Salt & pepper appearance is also seen in
 - Sjogren's syndrome
 - Pheochromocytoma
 - Carotid body tumour
 - Vertebral hemangioma



Dinner fork deformity

- Classical finding seen in Colle's fracture of radius.
- The dorsal displacement and angulation of the radius results in contour similar to dinner fork on lateral projection.



Licked candy stick appearance

- Tapering of the tips of the metacarpals, metatarsals, phalanges or clavicles.
- Associated with
 1. Psoriatic arthropathy
 2. Leprosy
 3. Rheumatoid arthritis



Champagne glass pelvis

- In achondroplasia, the iliac blades are flattened, giving rise to a pelvic inlet that resembles a champagne glass.
- The acetabular angles are increased, and the sacrosciatic notch is small.



Celery stalk metaphysis

- Vertical striations of long bones or pelvis.
- Seen in
 - Osteopathia striata
 - Congenital rubella infection



Onion skin periosteal reaction

- Lamellated periosteal reaction in which multiple concentric layers of new bone are laid down.
 - Acute osteomyelitis.
 - Osteosarcoma.
 - Ewing tumor.
- Multiple delicate layers of new bone represent alternating periods of rapid and slow growth.



Banana sign

- Seen at antenatal USG.
- Associated with neural tube defects.
- The cerebellum appears like a banana because it is wrapped around the posterior brainstem due to downward traction of the spinal cord.



Lemon Sign

- Abnormal shaped head seen at antenatal ultrasound in second trimester.
- The sign is a marker for open spina bifida seen in 98% cases.



Strawberry skull

- Seen in trisomy 18 (Edward's syndrome) and refers to the shape of the head.
- Related to hypoplasia of the frontal lobes.



Pear shaped bladder

- Bladder assumes the shape of a pear when it undergoes extrinsic compression due to excess tissue in pelvis.
- Pelvic lipomatosis.
- Pelvic hematoma.
- Pelvic lymphadenopathy.
- Extravasated urine.
- Pelvic fluid collection.



Cottage loaf appearance

- MRI appearance of a partially herniated liver through the ruptured hemi diaphragm.
- Resembles a traditional bread prepared in England.



Omental cake

- Infiltration of the omental fat by material with soft tissue density.
- Causes include
 - Metastases- most commonly from ovary, stomach and colon.
 - Tubercular peritonitis



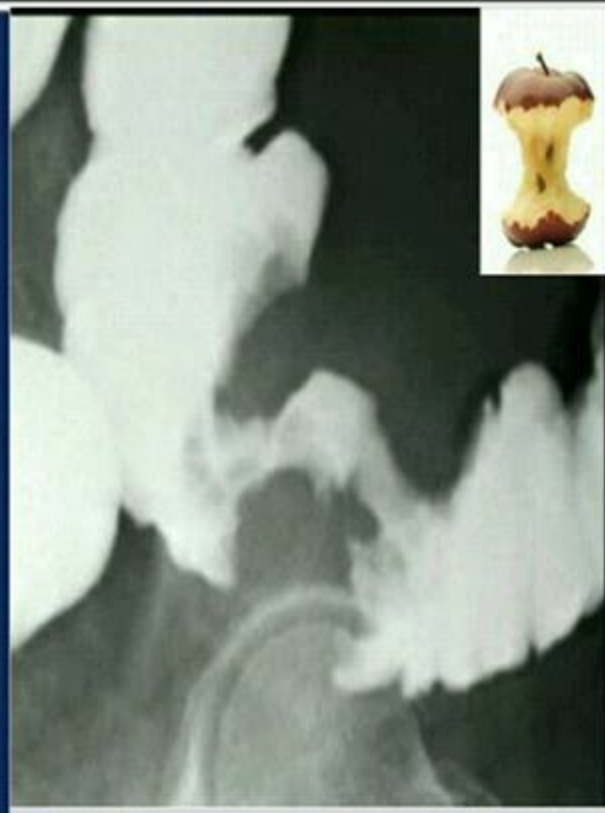
Berry aneurysm

- The appearance of the intracranial saccular aneurysm on CT scan.
- May occur in isolation or in association with polycystic kidneys or coarctation of aorta.



Apple Core Lesion

- Annular carcinoma of colon produces focal circumferential thickening of the bowel wall, narrowing of colonic lumen, associated with shouldering.
- On barium gives appearance of partially eaten apple.



Pancake vertebra

- Flattening of vertebral body.
- Caused by compression fracture of the vertebral body.
- May result from trauma or pathological fracture due to-
 - Eosinophilic granuloma
 - Osteogenesis imperfecta
 - Tumor (metastasis, myeloma, lymphoma)



DISH (Forestier disease)

- Bone proliferation at sites of tendinous and ligamentous insertion.
- Cervical and thoracic spine in particular are affected.
- Florid, flowing ossification is noted along the anterior or right anterolateral aspects of at least 4 contiguous vertebrae.
- Disc spaces are usually well preserved.

